

海外区域

海外区域

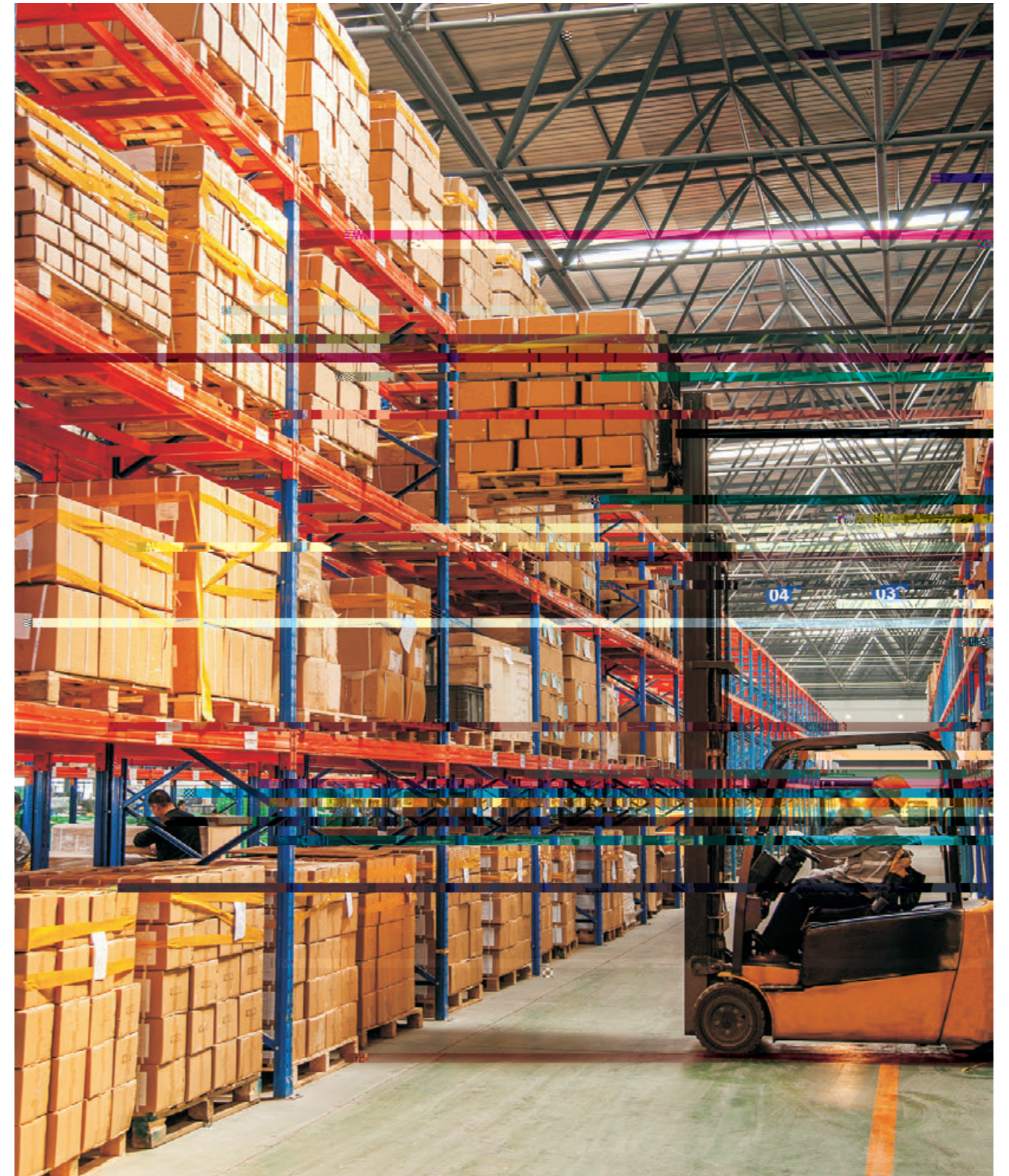
+62 21 22604802 ifeindo@ifelift.com  
The Mansion Dukuh Golf Kemayoran Tower Fontana Lt. 21 Unit L2&m2,  
Jl Trembesi Blok D4 Pademangan Timur Pademangan Jakarta Utara Dki Jakarta 14410

+86 13929229955  
23 Genting Road #07-01/02 Chevalier House Singapore 349481

西北区

- +86-029-86240696 C 1703
- +86-0931-2664041 1 1202
- +86-0991-5850699 322 A 9D
- +86-0951-5102334 A 813
- +86-028-86983080 1700 S1-9 935
- +86-023-62826337 2 26-6
- +86-0851-86754256 E1 2603
- +86-0871-65658850 h[ 2 3

<86-769-82078888 <86-769-87732448  
400>6789>443 www.ifelift.com



# ATLAS / FPA

@

SE 1

U.pi-½Y. + 8

# 国内经典案例



HUB



# 国外经典案例



Western Australian Cancer Centre



Parklands Expansion Project



Car Lift- 3 East Crescent McMahon's Point



Toyota Parking center



VIETNAMSHINING STAR PRINTINH AND PACKAGING CO., LTD



Mayora Pasuruan Project



Huajian Light Industry Zone



ABC HOTEL LAHUG



Mirkazz Mall



SMT Building of Navitas India Private Limited- Revised Version



ITC Corporation



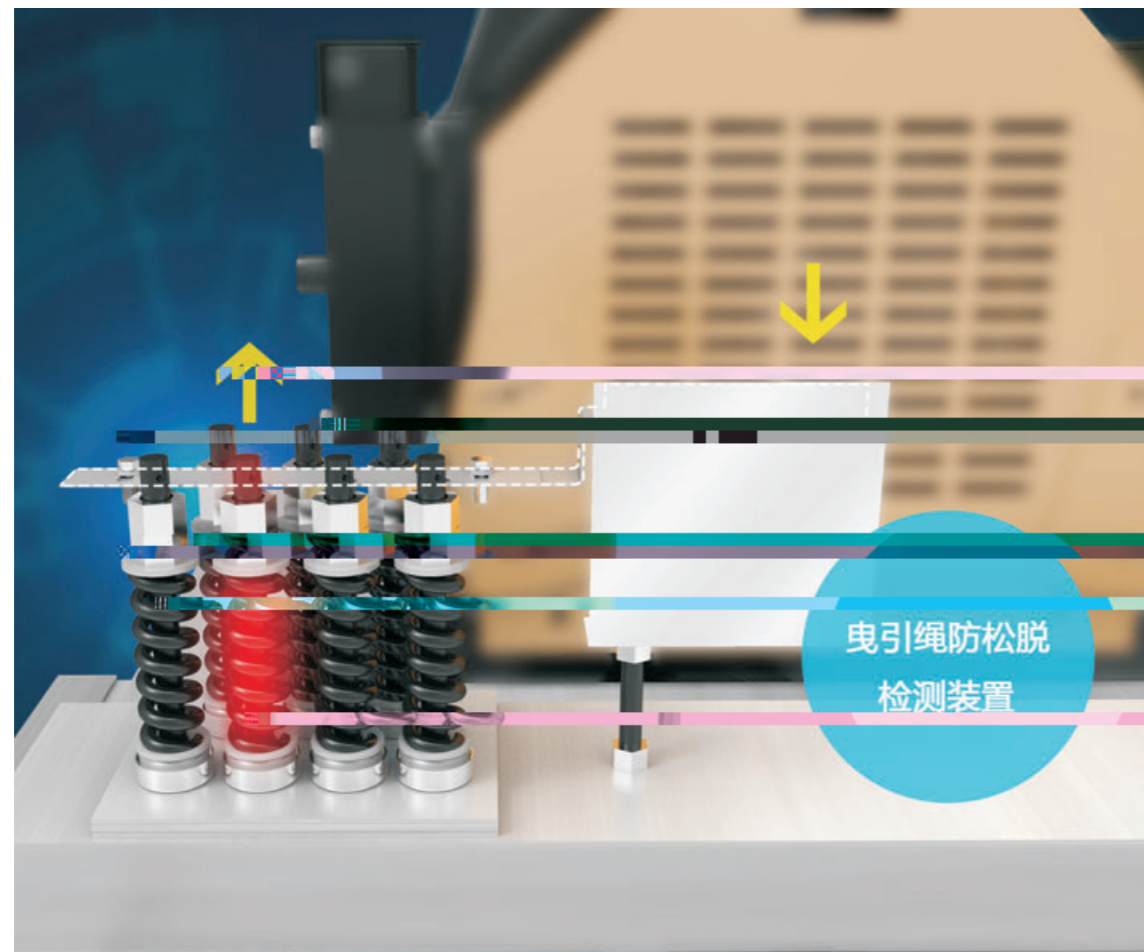
PT.Tirta Fresindo Jaya Cargo Lift Ciherang Bogor Project

1111  
1111  
1111  
1111  
1111  
1111

11  
1  
1

ZL201420470694.01

11

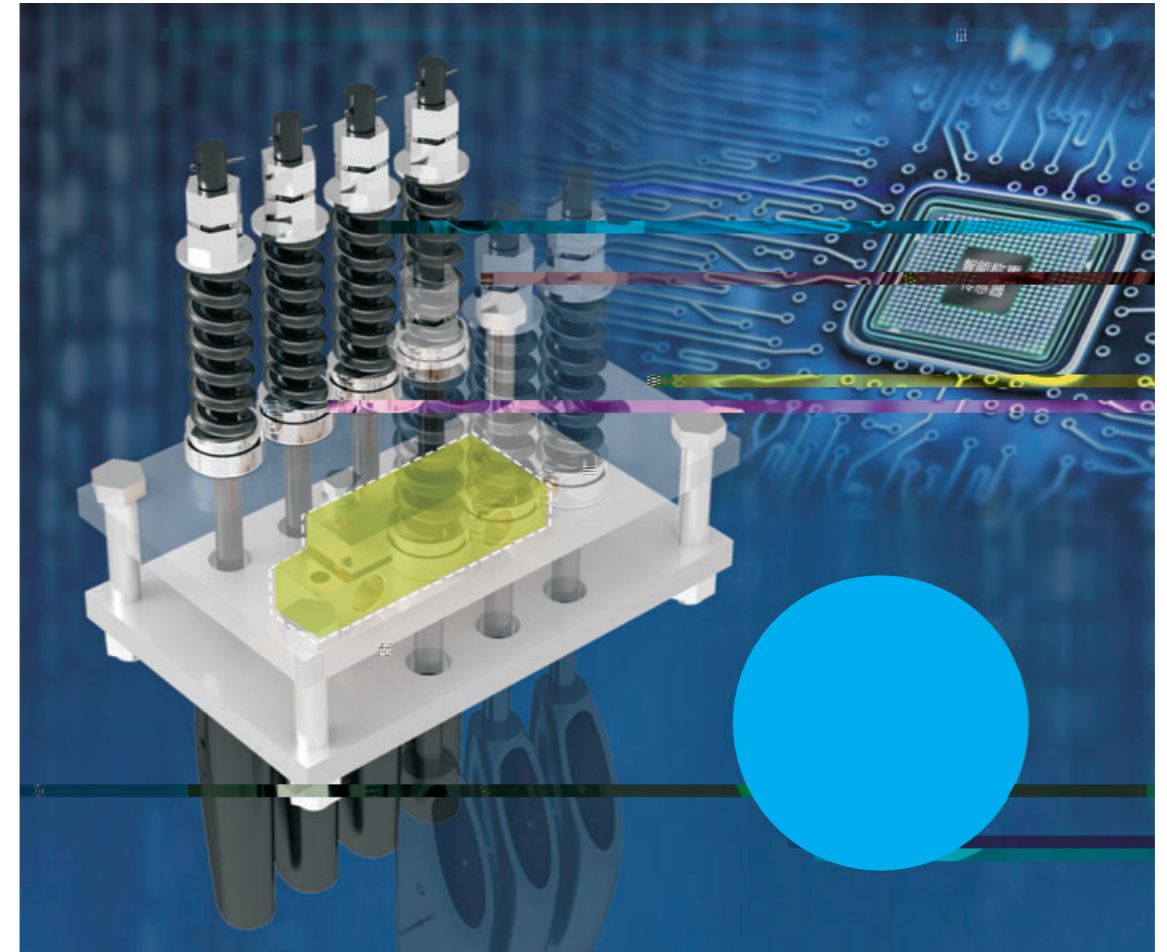


( )  
300mm  
( )  
180s 60s  
EMS ( )  
1111

ZL201410337015.71

1

1



高强度轿厢架

5mm

层门强度测试 高于国家标准

45kg 1100mm ( 800mm )

( )

1111

1111

1111

1111



TüV A  
T V  
4707 PART 1 A

VDI



EMC  
CE  
EMC



CE

AGV

AGV ( )

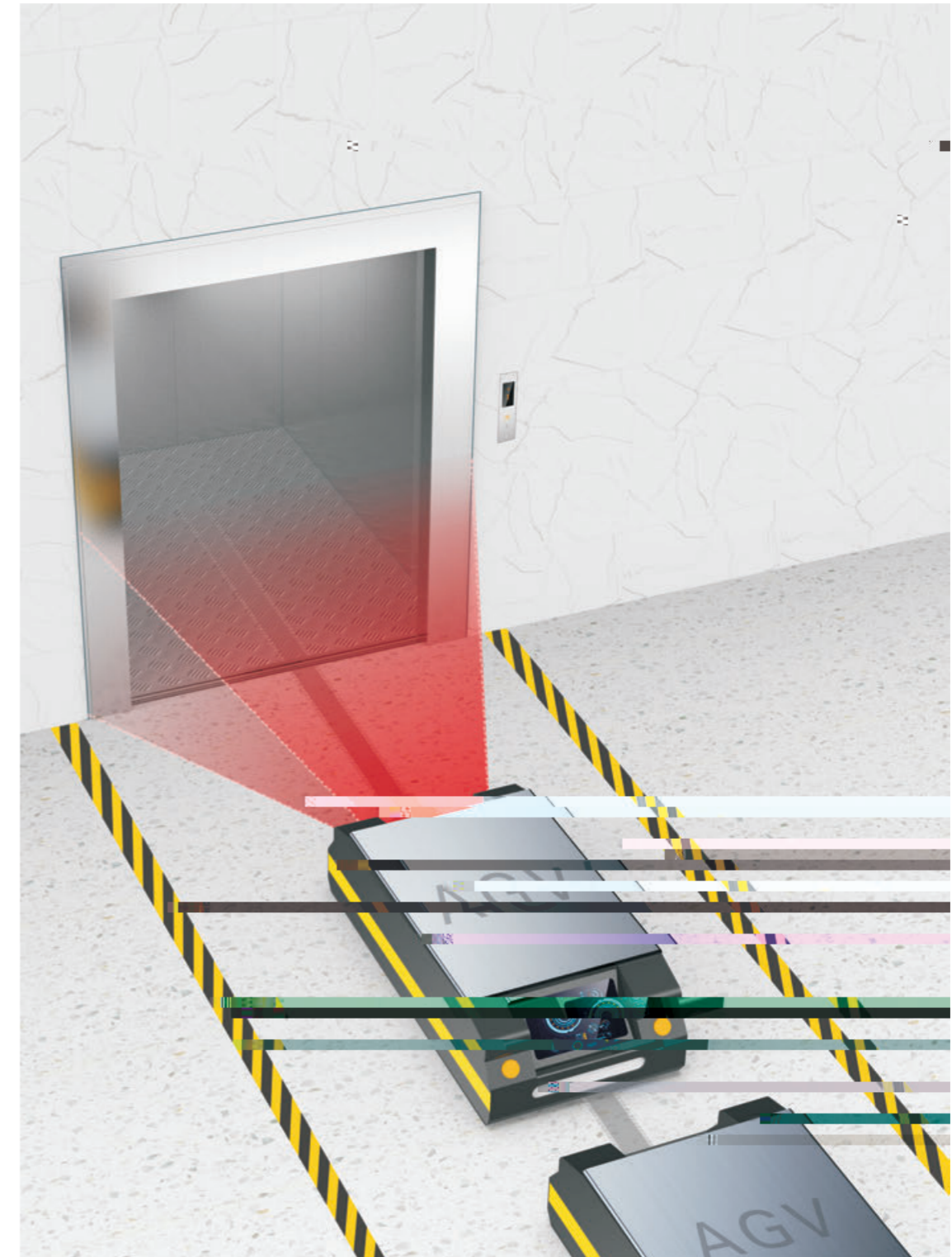
AGV

9

AGV

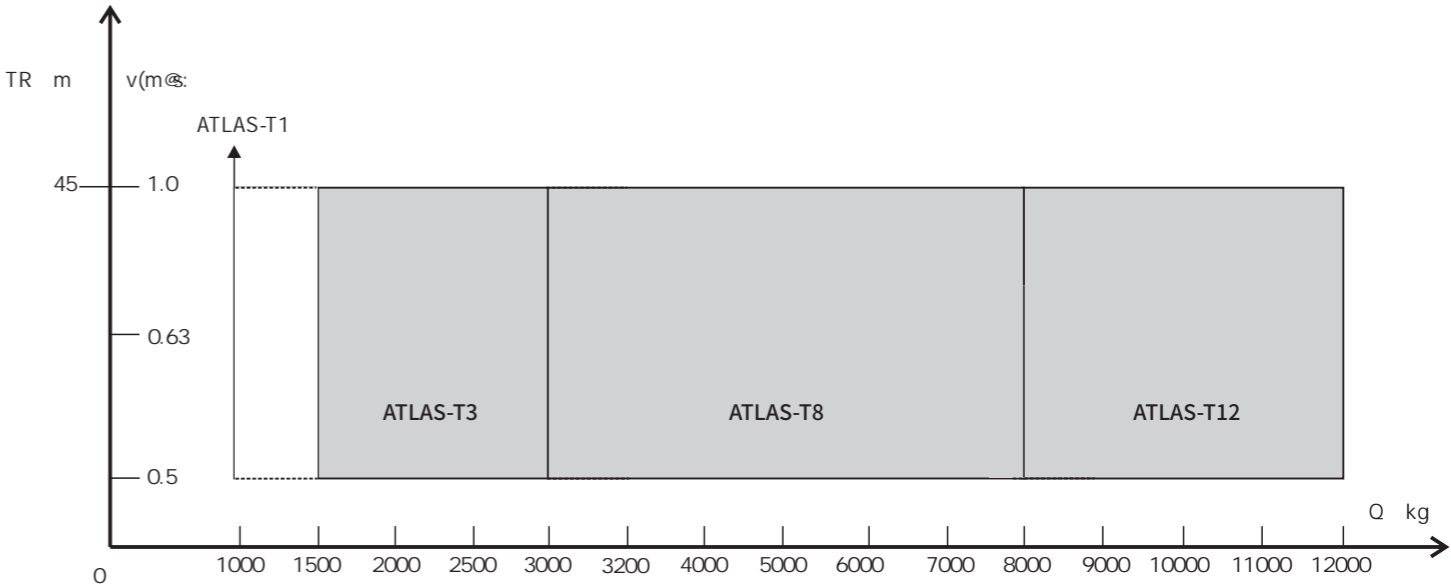
:1

1





# ATLAS



	ATLAS-T1	ATLAS-T3	ATLAS-T8	ATLAS-T12
Q(kg)	1000	1500 2000 2500 3000	3200 4000 5000 6000 7000 8000	9000 10000 11000 12000
v(m/s)	0.5 1.0	0.5 1.0	0.5 1.0	0.5 0.63
TR(m)	45	45	45	45





mQ  
5000v

4S

## EPA汽车电梯特殊功能

B: 与停车场智能停车设备联动, 实现自动泊车和自动取车

A 与



CAR180( )

操纵箱: COP100 发纹不锈钢

钢板喷涂亚光灰

轿门: LDP110 钢板喷涂亚光灰( )

LED

LDP120 钢板喷涂亚光灰( )

F3001



CAR280(选择 )

操纵箱: COP100 发纹不锈钢

发纹不锈钢

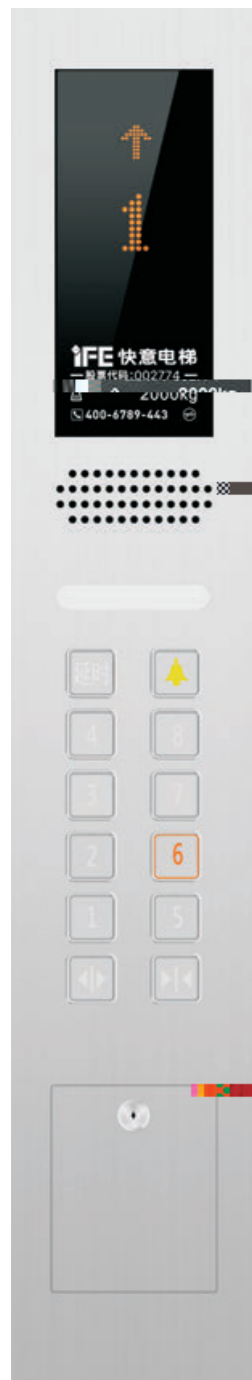
轿门: LDP310 发纹不锈钢( )

: LED

LDP320 ( )

: F300

LED



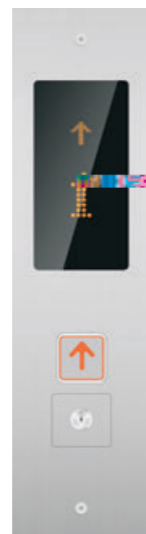
COP100( )

面板：发纹不锈钢  
显示：橙色点阵



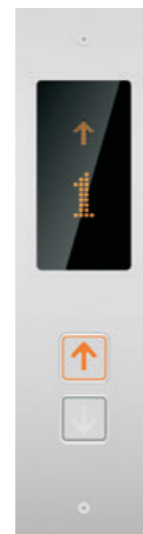
COP104( )

面板：发纹不锈钢  
显示：白色点阵



HOP100( )

面板：发纹不锈钢  
显示：橙色点阵  
首层效果



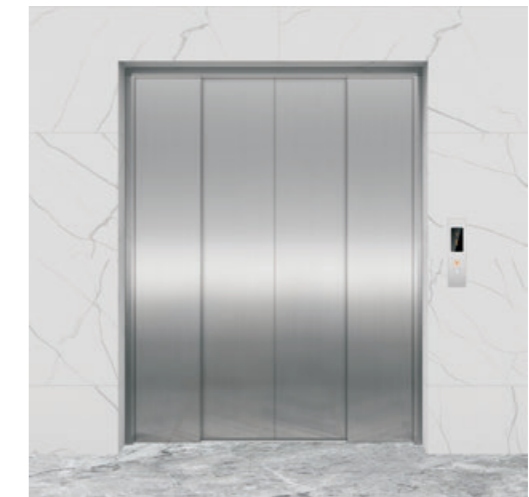
其他层效果



LDJ1101

LDP110

LDP120 钢板喷涂亚光灰(中分双折)

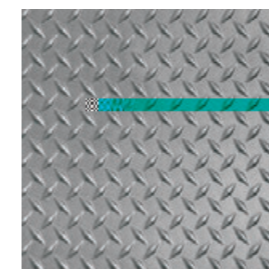


门套：LDJ120 发纹不锈钢

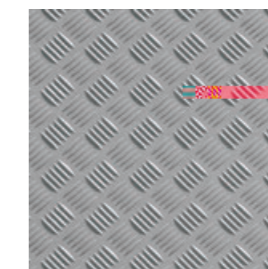
层门：LDP310 发纹不锈钢(旁开)

LDP320

地坎：成型钢材



F300



F400

# ATLAS货梯系列功能表

运行功能

01		
02		
03		
04		
05		
06		
07		
08		
09		
10		

# FPA汽车电梯系列功能表

## 运行功能

01		
02		
03		
04		
05		
06		
07		
08		
09		
10		

## 

11		
12		
13		
14		
15		
16		
17		
18		
19		
20		
21		
22		
23		
24		
25		
26		
27		
28		07m/s
29		
30		
31		
32	UCMP	
33	9	:

34		
----	--	--

## 特殊运行

35		
36		
37		
38		
39		
40		
41		
42		
43		

## 

44		
45		
46		

## 

47		
48		
49		4x0775mm( 1800 :
50		
51		4
52		

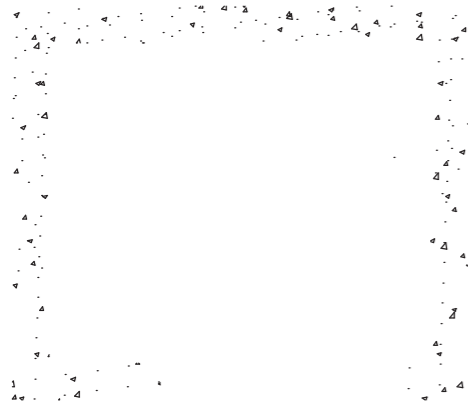
## 

53		
54		

## 

01		
02		
03		
04		300mm
05		
06	15	
07		=
08		180s 160s
09		

## ATLAS-T1井道布置平面图



T1

T1

### ATLAS-T1技术参数规格

(kg)	(m/s)	(mm)			(mm)		(mm)	(mm)	(m)	(mm)		(RVV )
		( + )	( - )		( + )	( - )				( + )	( - )	
1000	0.5	1400*1600*2200	1400*2100		2500*2100	2500*2100	4200	1500	45	2500*2100*2200	3*6mm <sup>2</sup> +2*6mm <sup>2</sup>	
	1.0				4300	1600						

1?



## ATLAS-T3井道布置平面图

T3

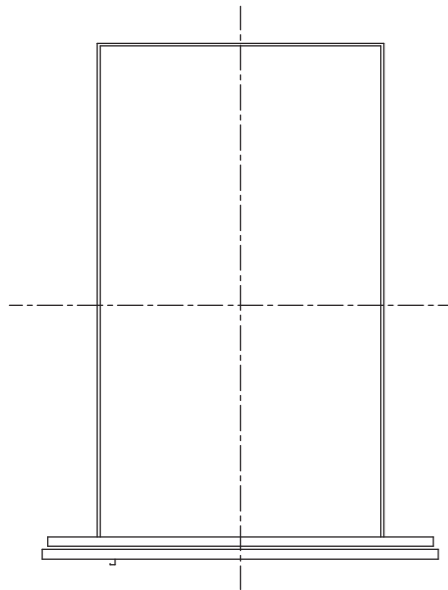
T3

### ATLAS-T3技术参数规格

1?



## ATLAS-T8井道布置平面图



T8

## ATLAS-T12井道布置平面图

T12

T8

T12

### ATLAS-T8技术参数规格

(kg)	(m/s)	(mm)		(mm)	(mm)		(mm)	(mm)	(m)	(mm)		(RVV)
		( )	( )		( )	( )				( )	( )	
3200	0.5	2300*2600*2500	1800*2400	3400*3050	3450*3100	4500	1600	45	3400*3050*2200	3450*3100*2200	3*6mm <sup>2</sup> +2*6mm <sup>2</sup>	
	1.0					4550	1600				3*10mm <sup>2</sup> +2*6mm <sup>2</sup>	
4000	0.5	2300*3200*2500	1800*2400	3400*3550	3450*3700	4500	1600	45	3400*3550*2200	3450*3700*2200	3*6mm <sup>2</sup> +2*6mm <sup>2</sup>	
	1.0					4550	1600				3*16mm <sup>2</sup> +2*10mm <sup>2</sup>	
5000	0.5	2500*3500*2500	2200*2400	3600*3850	3750*4000	4500	1600	45	3600*3850*2200	3750*4000*2200	3*10mm <sup>2</sup> +2*6mm <sup>2</sup>	
	1.0					4550	1600				3*25mm <sup>2</sup> +2*16mm <sup>2</sup>	
6000	0.5	2500*4200*2500	2200*2400	3600*4550	3600*4700	4500	1600	45	3600*4550*2300	3600*4700*2300	3*10mm <sup>2</sup> +2*6mm <sup>2</sup>	
	1.0					4550	1600				3*25mm <sup>2</sup> +2*16mm <sup>2</sup>	
7000	0.5	2800*4300*2500	2500*2400	4000*4650	4000*4800	4500	1750	45	4000*4650*2300	4000*4800*2300	3*16mm <sup>2</sup> +2*10mm <sup>2</sup>	
	1.0					4550	1750				3*35mm <sup>2</sup> +2*16mm <sup>2</sup>	
8000	0.5	2800*4900*2500	2500*2400	4000*5250	4000*5400	4500	1750	45	4000*5250*2300	4000*5400*2300	3*16mm <sup>2</sup> +2*10mm <sup>2</sup>	
	1.0					4800	1750				3*50mm <sup>2</sup> +2*25mm <sup>2</sup>	

### ATLAS-T12技术参数规格

(kg)	(m/s)	(mm)		(mm)	(mm)		(mm)	(mm)	(m)	(mm)		(RVV)
		( )	( )		( )	( )				( )	( )	
9000	0.5	2800*5400*2500	2500*2400	4050*5750	4050*5900	4500	1850	45	4050*5750*2300	4050*5900*2300	3*25mm <sup>2</sup> +2*16mm <sup>2</sup>	
	0.63					4500	1850				3*25mm <sup>2</sup> +2*16mm <sup>2</sup>	
10000	0.5	3000*5600*2500	2800*2400	4500*5950	4500*6100	4500	1850	45	4500*5950*2300	4500*6100*2300	3*35mm <sup>2</sup> +2*16mm <sup>2</sup>	
	0.63					4500	1850				3*35mm <sup>2</sup> +2*16mm <sup>2</sup>	
11000	0.5	3000*6100*2500	2800*2400	4500*6450	4500*6600	4500	2000	45	4500*6450*2300	4500*6600*2300	3*25mm <sup>2</sup> +2*16mm <sup>2</sup>	
	0.63					4500	2000				3*50mm <sup>2</sup> +2*25mm <sup>2</sup>	
12000	0.5	3000*6700*2500	2800*2400	4500*7050	4500*7200	4500	2000	45	4500*7050*2300	4500*7200*2300	3*25mm <sup>2</sup> +2*16mm <sup>2</sup>	
	0.63					4800	2000				3*50mm <sup>2</sup> +2*25mm <sup>2</sup>	

## ATLAS-WT3井道布置平面图

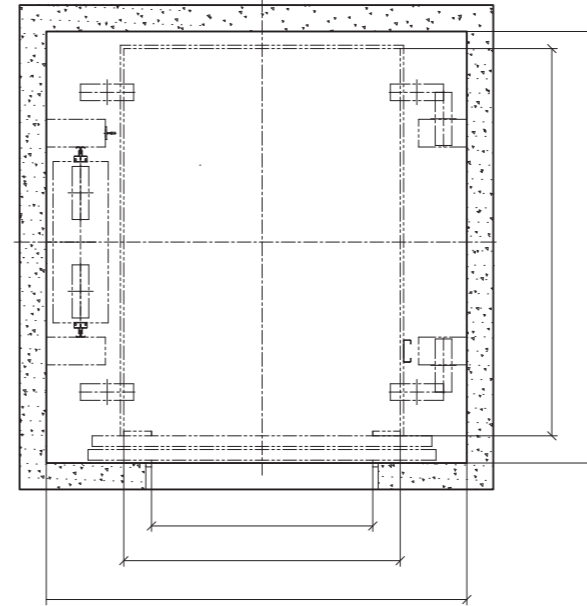
WT3

WT3

### ATLAS-WT3技术参数规格

(kg)	(m/s)	(mm)	(mm)	(mm)		(mm)	(mm)	(m)	(RVV)
				(mm)	(mm)				
1500	0.5	1600*2100*2200	1400*2100	2800*2500	2800*2600	4300	1500	45	3*6mm <sup>2</sup> +2*6mm <sup>2</sup>
	1								3*10mm <sup>2</sup> +2*6mm <sup>2</sup>
2000	0.5	1800*2300*2200	1600*2100	3000*2700	3000*2800	4400	1500	45	3*6mm <sup>2</sup> +2*6mm <sup>2</sup>
	1								3*10mm <sup>2</sup> +2*6mm <sup>2</sup>
2500	0.5	2000*2500*2200	1800*2100	3300*2900	3300*3000	4400	1500	45	3*6mm <sup>2</sup> +2*6mm <sup>2</sup>
	1								3*10mm <sup>2</sup> +2*6mm <sup>2</sup>
3000	0.5	2300*2500*2200	2000*2100	3600*2900	3600*3000	4400	1500	45	3*6mm <sup>2</sup> +2*6mm <sup>2</sup>
	1								3*10mm <sup>2</sup> +2*6mm <sup>2</sup>

## ATLAS-WT5井道布置平面图



WT5

WT5

### ATLAS-WT5技术参数规格

平面

FPA-WT

3*10mm <sup>2</sup> +2*6mm <sup>2</sup>
3*10mm <sup>2</sup> +2*6mm <sup>2</sup>
3*10mm <sup>2</sup> +2*6mm <sup>2</sup>
3*16mm <sup>2</sup> +2*10mm <sup>2</sup>
3*10mm <sup>2</sup> +2*6mm <sup>2</sup>
3*25mm <sup>2</sup> +2*16mm <sup>2</sup>

45